

GEAR LIST

The weather in the area we visit is very unpredictable and suitable clothing is vital to a successful, safe and enjoyable trip.

Every person (adult and child) on every trip must have ALL of the items listed.

If not hiring from the Taurewa Room, all highlighted gear **must** be brought in to be safety checked the week prior to departure.

Hired boots and sleeping bags are stored in the Taurewa Office and loaded on the bus, on the morning of departure.

✓ Item	Minimum Number	Hire Cost
Boots	1 pair	\$6.00 pair
Raincoat	1	\$6.00 each
Overtrowsers - wet weather pants	1 pair	\$6.00 pair
Long Sleeve Thermal - woollen or poly pro	2	\$2.00 each
Short Sleeve Thermal - woollen or poly pro	2	\$2.00 each
Long johns - woollen or poly pro	2	\$2.00 each
Woollen jumper	1	\$3.00
Bush shirt or polar fleece	1	\$3.00
Woollen Hats	2	\$1.00 each
Woollen mittens	2 pair	\$2.00 pair
Woollen socks	3 pair	\$3.00 pair
Sleeping Bag (-3°C) and Liner (inc. cleaning)	1	\$22.00
Trackpants	1 pair	\$1.00
Shorts	2 pair	\$1.00 each
Running shoes	2 pair	\$2.00 each
Pyjamas - warm	1 pair	
Underwear	Sufficient for daily changes	
Swimming togs (appropriate)		
Sunhat (in the summer months)		

Note:

- Jeans can be worn in camp only - not on any other activity.
- Quick dry T-shirts are allowed but not as a replacement for wool or polypro
- Running shoes/sports shoes etc - minimum of two pairs are needed for the lighter activities. One pair will get wet and dirty (keep your good gear at home!)
- Everyone must change footwear before entering the lounge

✓ Item	Minimum Number	Hire Cost
Day pack - for the smaller walks etc (able to hold lunch, drink and extra clothing)	1	\$1.00
Towels	2	
Drink bottles - 1.5 litres	at least 2	
Pillow and pillow case		
Sheet - to cover mattress		
Toiletries - toothbrush, deodorant, soap, shampoo, personal hygiene items, etc		
Torch and spare batteries		
Personal medication prescribed for asthma, diabetes, epilepsy, allergies as stated on your health form.		
Sunglasses, sunblock, lip block		
Extra plastic bags - handy for gear, wet clothes and vital for overnight		

✓ Year 13	Minimum Number	Hire Cost
Overnight Pack + Liner (to be returned)	1	\$11.00
Plate, bowl, mug, spoon, knife, fork, tea towel		

OPTIONAL

Nibbles - scroggin etc, for munching along the way (NO NUTS)
Games - cards, board games, table tennis bat etc
Camera
Hot water bottle (in the winter months)
Jandals/sandals/slippers for wearing around camp
Guitar - or other musical instrument

CARRY ON TO THE BUS

Your pillow	Your day pack
Your raincoat	Your warm jumper/polar fleece
Your lunch (if packed)	Your cellphone
Your money	Your personal medication



AVONDALE
COLLEGE



TAUREWA CAMP INFO

outdoor education

Avondale College is fortunate to have its own Outdoor Education Camp at Taurewa, located beside the World Heritage Site of the Tongariro National Park.

Students in Year 10, 12 and 13, and International students, have the opportunity to attend Taurewa and share the considerable educational, social and environmental benefits that camp has to offer. Many of our students tell us Taurewa is one of the highlights of their time at College!

Depending on the season and the year level, activities are supported by The Salvation Army Blue Mountain Adventure Centre instructors and might include:

- low/high ropes course
- indoor rock climbing
- tramping
- mountain biking
- caving
- Tongariro National Park Visitors' Centre
- canyoning
- hot pools - and more!
- skiing (Term 3)
- rafting



Director of Taurewa: Ms M Goldthorpe

Email: taurewa@avcol.school.nz Ph: (09) 820 1719

Taurewa Office hours: Mon - Fri, 8:30am - 4:00pm





DEPARTURE/RETURN

Meet outside the front of the Atrium on Monday 6.30am. Bus returns to school on Friday at approx 2.45pm.

GEAR HIRE

Taurewa is situated in an isolated alpine area, and correct preparation is vital. Students (and adult helpers) are able to hire gear from Avondale College's Taurewa Office.

Hireage charges will be loaded onto your family's account.

RULES & EXPECTATIONS

It is important that everyone is aware of the code of behaviour expected of students.

Any serious breach of the camp rules could result in the student being returned to school at the parent's expense - parents will be asked to collect their child from camp. On the student's return to school he/she would be disciplined by the Director of Taurewa, Deans, or the Principal and the BOT. There would be no refunds and any cost to the school would be met by the parent/guardian/caregiver.

- **Please note: All Taurewa Trips are not free**
- Students are under normal school discipline during the whole trip.
- No student may leave the camp precincts, except in an organised group.
- No student may go into any hut other than his/her own at any time for any reason unless instructed by a staff member; this includes the staff, adults and driver's huts. No student may invite others into his/her hut.
- On tramps or field trips, students must not leave the main party, and they must obey the leader promptly.
- Cigarettes (including e-cigarettes and vaping), alcohol, drugs and sex, are absolutely forbidden.
- Students are allowed to take their cellphones on the bus to camp and on the way home to Avondale College. Students must hand their cellphone to staff on arrival at camp, and they will be stored in the camp safe. Any phones found at camp will be confiscated.
- Students must go to bed when told.
- After lights out, no student may leave his/her hut except to go to the toilet or to go to a teacher in case of illness or emergency.
- **Total cooperation is expected during the entire trip.**

COSTS

Taurewa Camp is an optional camp offered as a co-curricular activity and has a substantial overnight component, therefore it is permitted under the Ministry of Education donation scheme to request a contribution from parents to assist with covering the cost of camp. Students who do not participate will continue with their usual programme of learning at school.

The Avondale College Board of Trustees subsidises part of the cost of camp for each student. The remaining cost for families (which goes towards transport, food and activities for the week) will be \$465. The \$465 is inclusive of a \$50 non refundable deposit to be paid on completion of the consent form.

Gear and clothing hireage is additional (see overleaf).

We encourage families to start making early payments towards the final cost, as the total amount must be paid two weeks prior to departure.

Payment can be made via the school's secure payment portal in Family Connection, by direct credit to Avondale College's account (03-0109-0291016-00 and include your family code and 'Taurewa' on the details) or you can pay at the main office or College Shop.

Lunch is not provided on travel days (Monday and Friday), so students will need to bring either a packed lunch on Monday or sufficient funds for lunches on both days.

ADULT HELPERS

Each trip requires extra adult help in order for the camp to go ahead. Although the week at camp is not strenuous, a reasonable fitness level is required. Adults are expected to join in with the activities and help with the running of the camp. They must be over 21 and are required to complete a police check. There is no cost for adult helpers (including gear hire). If interested, please let the Taurewa Office know!



Gear is hired in the week prior to departure:

Monday

10.55am-11.10am & 12.45 pm -1.30 pm

Tuesday or Wednesday

11.10-11.30 & 12.30 pm -1.15 pm

No gear is issued on Thursday and Friday

Gear not hired from the Taurewa Office **must** be brought in for a safety check **before school** from 8:30am, Mon - Wed.

The gear borrowed is needed for the next trip, so a swift return is vital.

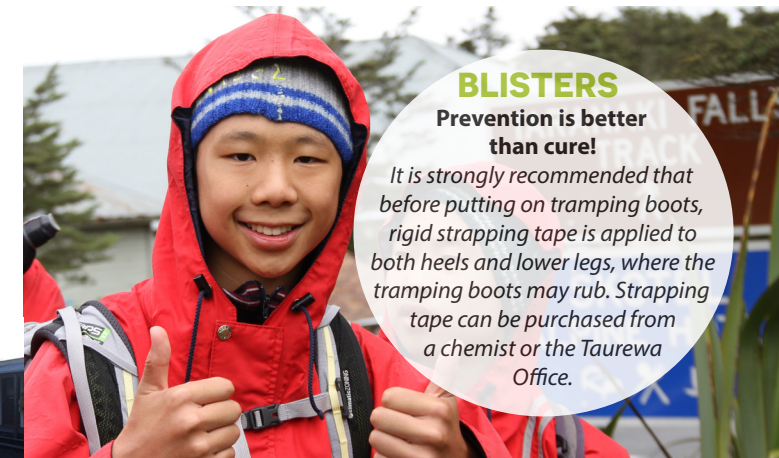
Any damage or loss will have to be paid for. Replacement value is charged for all lost, damaged and unreturned items.

Please wash gear carefully - especially woollens. Woollen clothing should be hand washed in cold water and line dried (not put in the dryer).

Raincoats and overtrousers can be wiped down with a damp cloth, or if dirtier, they can go into the washing machine. Please roll cuffs back down and empty pockets before returning to the Taurewa Office.

Hired boots, sleeping bags and liners will be distributed at camp and collected on the final morning by staff.

Students should note there are no washing facilities for clothes at camp so they need to bring sufficient clothing (see list over page). Wet or dirty gear is put in the camp drying room and worn again once it is dry.



BLISTERS

Prevention is better than cure!

It is strongly recommended that before putting on tramping boots, rigid strapping tape is applied to both heels and lower legs, where the tramping boots may rub. Strapping tape can be purchased from a chemist or the Taurewa Office.